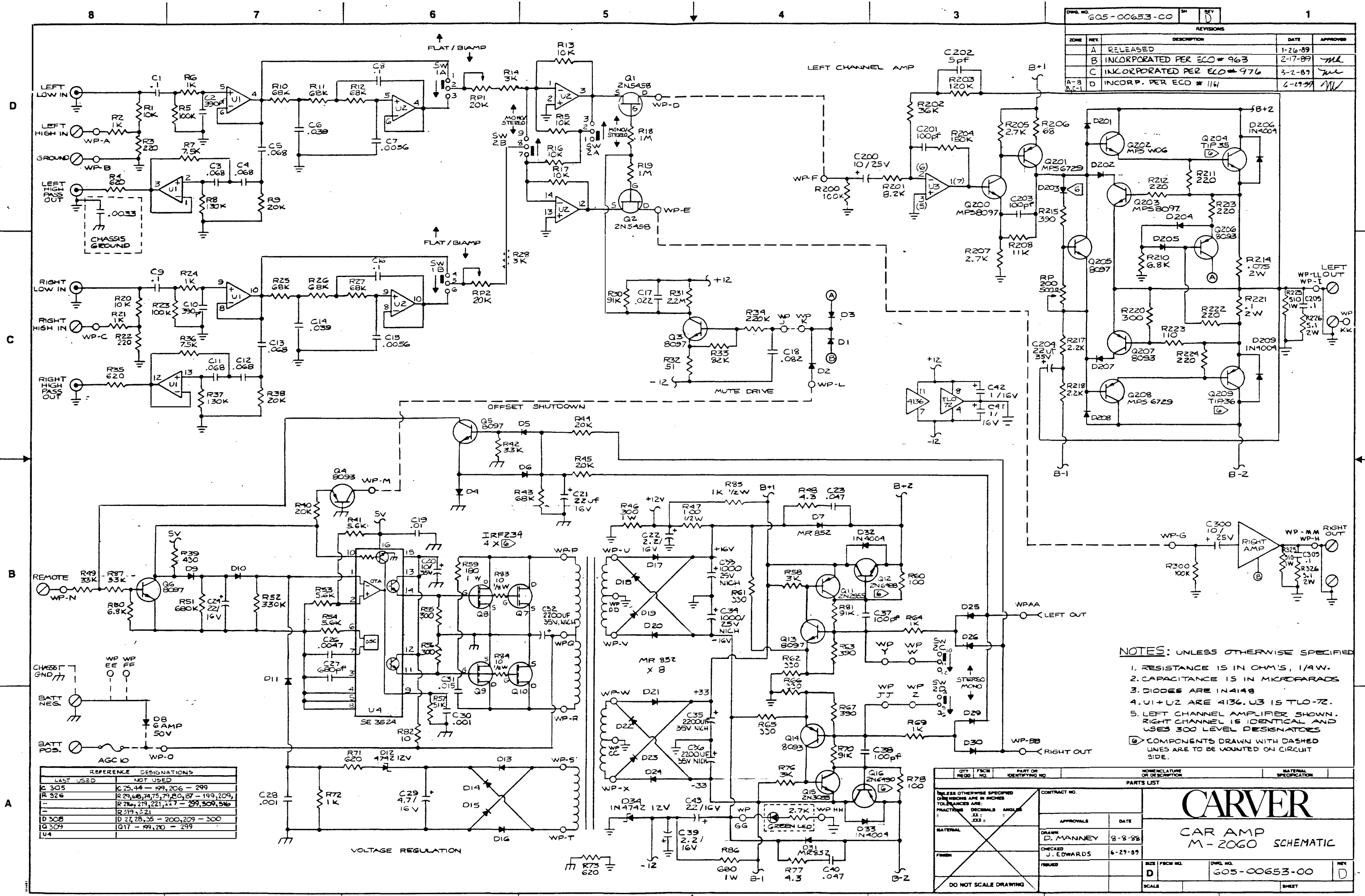


CARVER

M-2060

SCHEMATICS AND LAYOUTS

REV. NO.		REV.	
605-00653-00		D	
REVISIONS			
ZONE	REV.	DESCRIPTION	DATE
A		RELEASED	1-26-89
B		INCORPORATED PER ECO # 963	2-17-89
C		INCORPORATED PER ECO # 976	3-2-89
D		INCORP. PER ECO # 114	6-29-89



- NOTES:** UNLESS OTHERWISE SPECIFIED
1. RESISTANCE IS IN OHM'S, 1/W.
  2. CAPACITANCE IS IN MICROFARADS
  3. DIODES ARE 1N4148
  4. U1+U2 ARE 4136. U3 IS TLO-72.
  5. LEFT CHANNEL AMPLIFIER SHOWN. RIGHT CHANNEL IS IDENTICAL AND USES 300 LEVEL DESIGNATORS
- Ⓞ COMPONENTS DRAWN WITH DASHED LINES ARE TO BE MOUNTED ON CIRCUIT SIDE.

LAST USED	REFERENCE DESIGNATIONS	NOT USED
C 305	C 25, 44 - 49, 206 - 299	
R 326	R 23, 46, 74, 75, 79, 80, 87 - 199, 209,	
	R 216, 219, 221, 227 - 299, 300, 346	
D 308	D 219, 221	
Q 309	Q 27, 28, 35 - 200, 209 - 300	
U 4	U 17 - 49, 20 - 299	

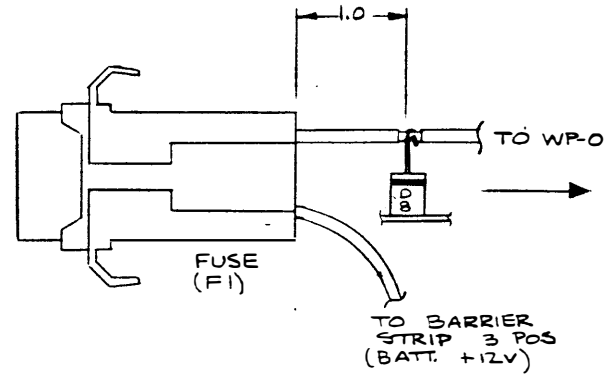
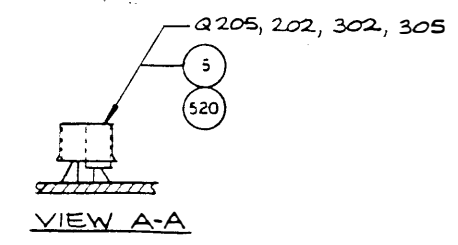
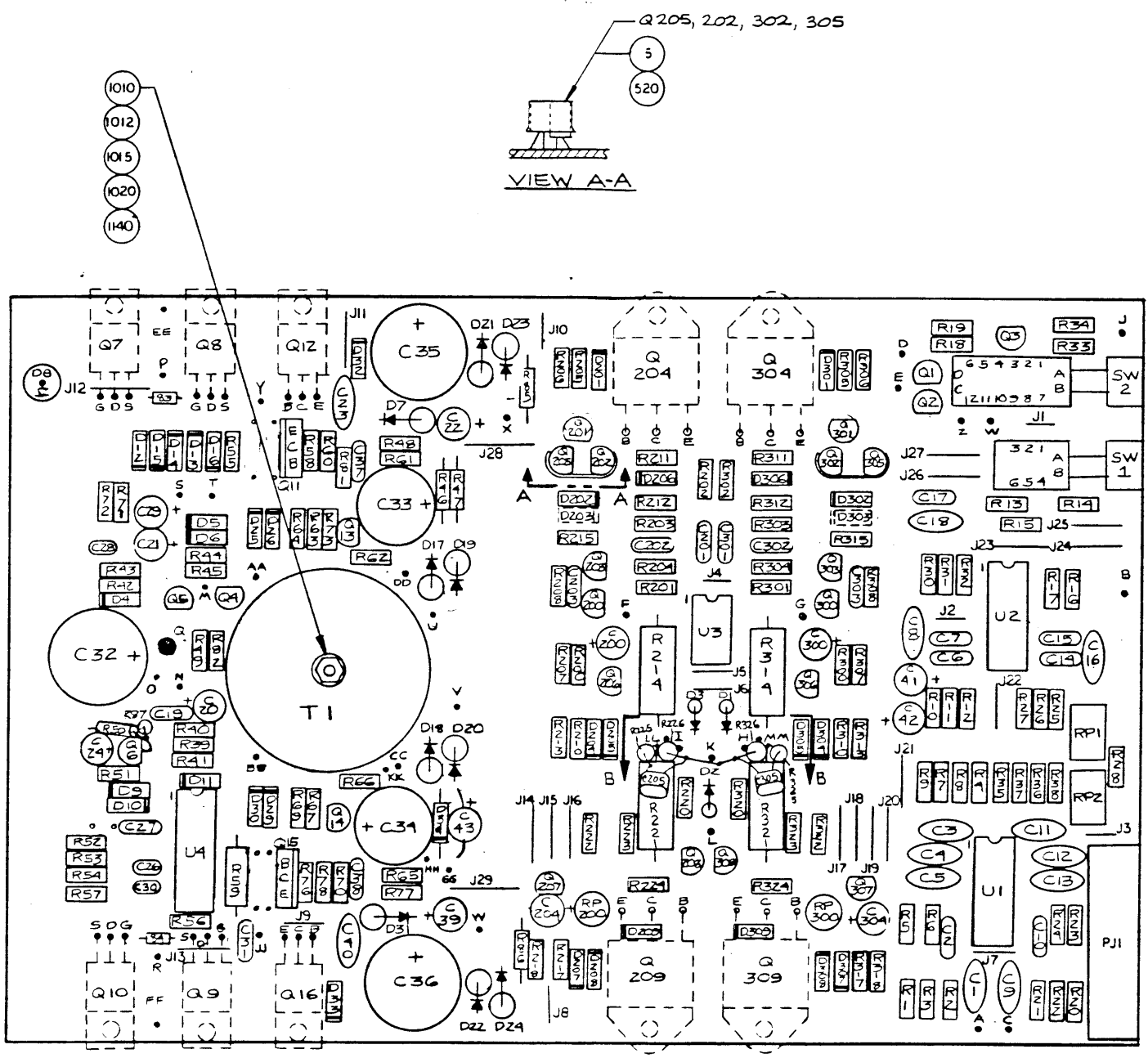
QTY REQD		FSCM NO.	PART OR IDENTIFYING NO.	NOMENCLATURE OR DESCRIPTION	MATERIAL SPECIFICATION
PARTS LIST					
UNLESS OTHERWISE SPECIFIED DIMENSIONS ARE IN INCHES TOLERANCES ARE FRACTIONS DECIMALS ANGLES					
MATERIAL					
FINISH					
DO NOT SCALE DRAWING					
CONTRACT NO.		APPROVALS			
		DRAWN		DATE	
		D. MANNEY		8-8-88	
		CHECKED		DATE	
		J. EDWARDS		6-29-89	
		ISSUED			
SCALE		D		D	
		DWG. NO.		REV.	
		605-00653-00		D	
		SHEET			

**CARVER**

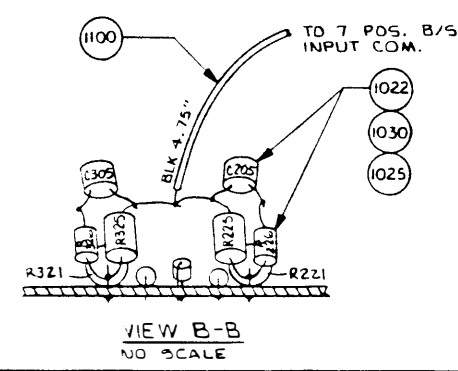
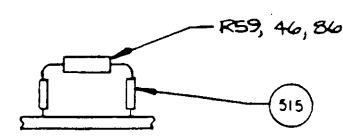
CAR AMP M-2060 SCHEMATIC

REVISIONS			
ZONE	REV	DESCRIPTION	DATE
A	1	RELEASED	1-25-89 DK
NO REWORKING. CHANGED ORIENTATION OF Q23 TO E70 + D22			
A1		INCORPORATED PER ECO NO. 963	12-17-89 JH
A2		INCORPORATED ECO 976	3-2-89 JH
A3		INCORPORATED PER ECO 1040	4-25-89 JH
B		ADDED CLEARANCE BETWEEN MNTG HOLES AT MID BD + PWR TRACES. CHG R210 REV R PER ECO # 1107	5-25-89 JH
A3-B-4		ADDED VIEW B-B & ITEMS 30, 35 & 40. ITEM 104 WAS 4.0" PER ECO # 1161	6-29-89 JH
A4		R225 WAS R226, R226 WAS R225, R325 WAS R326, R326 WAS R325. PICTORIAL ERROR ONLY. RE-REL. REV. C ECM # 91	8-14-89 JH
J		INCORPORATED ECO #1276: - REFERENCE DESIGNATORS ADDED: * PJ1, J1 TURN J29 * - NOTE 4 ADDED - REV STATUS CHANGED TO MATCH PARTS LIST. - NOTE 3 DELETED - DWG NO. FROM "501-00653-00" TO "602-00653-00" - NOTE 2 FROM "...601-00653-00..." TO "...602-00653-00..."	8-14-89 JH
K		INCRP. ECO # 1418	4/5/90 JH

- NOTES: UNLESS OTHERWISE SPECIFIED;
- COMPONENTS DRAWN WITH DASHED LINES ARE TO BE ASSEMBLED ON CIRCUIT SIDE OF PCB.
  - ALL ITEMS ARE ON 602-00653-00 PARTS LIST.
  - DELETED
  - USE PCB 501-00653-00



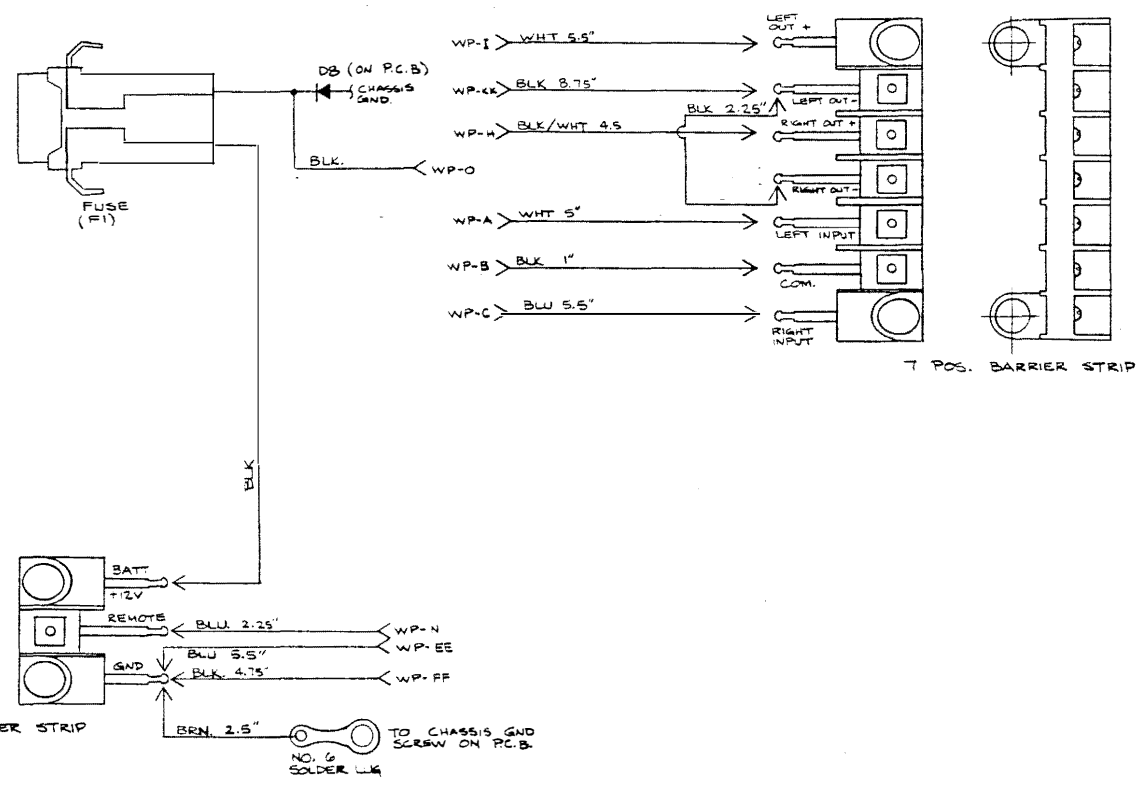
WIRE LIST				
ITEM	COLOR	LENGTH	FROM	TO
485	BRN	5.5"	WP-J	WP-K
475	WHT/BLU	4.0"	WP-E	WP-G
510	BLK/WHT	5.5"	WP-D	WP-F
495	YEL	5.75"	WP-MM	WP-BB
505	ORG	5.0"	WP-LL	WP-AA
460	WHT	5.5"	WP-I	7 POS B/S LFT OUT +
450	BLK	8.75"	WP-KK	7 POS B/S LFT OUT -
455	BLK/WHT	4.5"	WP-H	7 POS B/S RHT OUT +
480	WHT	5.0"	WP-A	7 POS B/S INPUT L
470	BLK	2.0"	WP-B	7 POS B/S INPUT COM
490	BLUE	5.5"	WP-C	7 POS B/S INPUT R
1100	BLK	4.75"	WP-FF	3 POS B/S GND
1105	YEL	5.75"	WP-EE	3 POS B/S GND
465	BLU	2.25"	WP-N	3 POS B/S REMOTE
(T1)	RED		TI-1	WP-P
(T1)	RED/RED		TI-2	WP-Q
(T1)	RED		TI-3	WP-R
(T1)	RED		TI-4	WP-T
(T1)	RED		TI-5	WP-S
(T1)	RED		TI-6	WP-W
(T1)	RED/GRN		TI-7	WP-DD
(T1)	GRN		TI-8	WP-X
(T1)	RED		TI-9	WP-V
(T1)	RED/GRN		TI-10	WP-CC
(T1)	GRN		TI-11	WP-U
1110	WHT/BRN	6.0"	WP-L	WP-M
LED REF	BLU	8.75	WP-HH	LED (ANODE)
LED REF	WHT	8.75	WP-GG	LED (CATHODE)



QTY REQD	FRCH NO.	PART OR IDENTIFYING NO.	NOMENCLATURE OR DESCRIPTION	ENTERIAL SPECIFICATION
PARTS LIST				
UNLESS OTHERWISE SPECIFIED DIMENSIONS ARE IN INCHES TOLERANCES ARE: FRACTIONS DECIMALS ANGLES				
CONTRACT NO.		APPROVALS		
DATE		DATE		
DRAWN D. MANNEY		6/19/89		
CHECKED J. EDWARDS		6-29-89		
ISSUED		DATE		
DO NOT SCALE DRAWING		SCALE 2/1		
MATERIAL		DRAWN		
FINISH		CHECKED		
SIZE / FRCH NO.		DWG. NO.		
D		602-00653-00		
REV		K		
SHEET 1 OF 2				

**CARVER**  
PCB ASSEMBLY,  
CAR AMP M-2060

DWG. NO. 606-00002-00		REV. 1	1
REVISIONS			
ZONE	REV.	DESCRIPTION	DATE
A		RELEASED TO PRODUCTION	2-28-9
B		DELETED: 215.10WV. P/N RES. 1.0-50 OHM. IN RES. 2= 1UF CAPS FROM BARRIER STRIP. IN NOTE 2 PER ECO # 167	6-29-99



NOTES: UNLESS OTHERWISE SPECIFIED.  
 1. SOLDER WIRE AND COMPONENT AS INDICATED USING SILVER SOLDER P/N 408-2002-00 AS REQUIRED.

QTY	FRAC	PART OR IDENTIFYING NO.	NOMENCLATURE OR DESCRIPTION	MATERIAL SPECIFICATION
UNLESS OTHERWISE SPECIFIED DIMENSIONS ARE IN INCHES FRACTIONS ARE DECIMALS ANGLES IN DEGREES				
CONTRACT NO.		PARTS LIST		
APPROVALS		DATE		
DESIGN P. GORMAN		2-28-9		
CHECKED J. EDWARDS		6-29-99		
MATERIAL		SCALE 2:1		
FINISH		DWG. NO. 606-00002-00		REV. B
DO NOT SCALE DRAWING		SHEET 1 OF 1		

**CARVER**  
 WIRING DIAGRAM  
 M2060